



Agricultural Oils

High performance lubricants
for agriculture.

Q8  **Oils**

WWW.Q8OILS.COM



01
About Q8Oils **03.**



02
Agricultural Product Range **08.**



03
Q8Oils Sustainability **40.**

AGRICULTURAL OILS

About Q8Oils

| | |
|------------------------------|----|
| About Q8Oils | 04 |
| Research & Development | 06 |
| Q8Oils PALub | 07 |
| QRAS | 07 |



01

At Q8Oils, we pride ourselves on being the preferred oil manufacturer across many sectors, offering innovative lubricant solutions tailored to meet the unique needs of each industry.

About Q8Oils

Q8Oils: Your preferred business partner

- Present in more than 100 countries
- Q8Oils has positioned itself as the leading supplier of lubricants for large enterprises in the international market
- Own R&D laboratories and state-of-the-art blending plants
- We offer a unique supply solution for all applications in various sectors:



Automotive

Energy

Metalworking

General Industry



مؤسسة البترول الكويتية
Kuwait Petroleum Corporation

Part of a Strong Group

Q8Oils is a subsidiary of Kuwait Petroleum Corporation (KPC), which is ranked as one of the world's top ten energy conglomerates. KPC helps meet the world's vital oil and gas needs via diverse business activities which span all aspects of the hydrocarbon industry, from onshore and offshore exploration, to production and refining, petrochemicals, marine transportation and retailing.

Be your customers' most trusted lubricant supplier with Q8Oils – Your Partner in Quality!



At Q8Oils, quality and responsibility go hand-in-hand

As a member of ATIEL, (the Technical Association of the European Lubricants Industry), we contribute to shaping ACEA European engine oil specifications to ensure the highest level of lubricant excellence on the market.

ATIEL pioneered the establishment of SAIL, an independent testing institute, to guarantee the quality of engine oils claiming to meet ACEA specifications. SAIL monitors product quality closely by subjecting random oil samples to rigorous laboratory testing. You can demonstrate your adherence to industry rules as defined by the European Engine Lubricant Quality Management System (EELQMS) easily by joining SAIL via its user-friendly platform.

Meeting specifications is crucial

At Q8Oils, our research department also tests lubricants for their compliance to standards and even exceed this standards. Our findings reveal that 50 % of oil samples fall short of EELQMS requirements. These products of competitors oil samples claim but fail to meet ACEA specifications – and these specifications form the foundation for OEM approval! Failing to meet ACEA standards jeopardizes your compliance with OEM specifications and also puts at risk various OEM specifications for oils that fall short in ACEA-defined tests.

Meeting ACEA E8 standards requires rigorous testing:

| Specification | Bench Test | Engine Test |
|---------------|------------|-------------|
| ACEA E8 | 16 | 7 |

Count on Q8Oils for:

- **Fully Tested Formulations:** Our commitment to quality includes testing our products precisely to meet the industry standards set by ACEA, API and JASO.
- **Approved Technology:** We use OEM-approved technology to ensure reliability and performance.
- **Q8 Research Endorsement:** Q8 Research tests every product thoroughly to guarantee excellence.
- **Engine Protection:** Q8 products prevent sludge and engine damage, to keep your engines clean and running.
- **Oxidation Stability:** Q8 products offer great oxidation stability, resulting in longer drain intervals and fewer oil changes.
- **Environmentally Responsible:** Reduce your environmental footprint by increasing engine efficiency, thanks to Q8 products.
- **Fuel Efficiency:** Achieve improved fuel efficiency, and reduced emissions with products tested according to ACEA requirements for E4/E6/E7/E8/E9/E11.



Research & development

Our R&D department is an important part of our search for innovative products and strategies. Through our extensive and intensive research, we determine the future technical requirements of lubricants. This is how we continue to exceed the expectations of the industry and our customers.

In our modern blending plants, as well as in our research and technology centers, we create products that meet and exceed the highest performance requirements. And that at a competitive market price.



State-of-the-art production facilities in Belgium, Italy and various productions via local partners. This combined with our own research & technology centers.



Products that exceed the highest performance requirements. Approved by all major OEMs.



Custom product development based on customer challenges and needs.



Superior solution for lubrication needs.

Key Facts

50+

years of experience in R&D in the petroleum sector

350.000

oil analyses per year

40+

scientists and support staff

1.000+

Lubricant products

More information on <https://www.Q8Oils.com/palub/>

Q8Oils PALub

Product Applications Lubricants represents the technical service division of Q8Oils. Our team comprises passionate experts with extensive knowledge in the sector. Don't hesitate to reach out to us for inquiries regarding product applications, specifications, safety requirements, and any other relevant information. We are here to assist you with enthusiasm and expertise.

Advise

Contact us for all your questions about our product range, new products, and market specifications.

Sales support

Our experts also support the sales team in visiting companies and distributors.

Marketing support

PALUB can provide support in the preparation of product datasheets, the development of brochures, translations (FR, NL, DE) and the creation of labels for large packaging.

Intermediary

PALUB can act as an intermediary between you and our R&D team.

Maintenance

We handle the maintenance of all tools provided through Q8Oils.

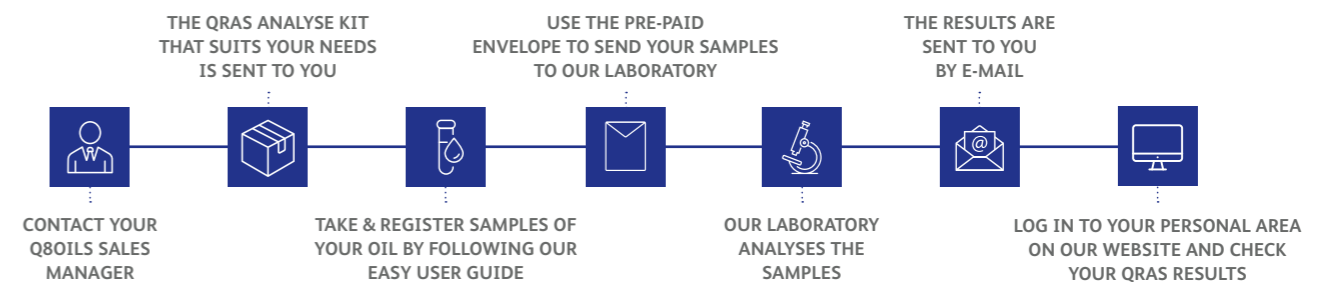
Training

We organize training courses on new products and/or applications, as well as extended introduction sessions for newcomers to the oil market.

QRAS

Q8Oils Routine Analysis Service

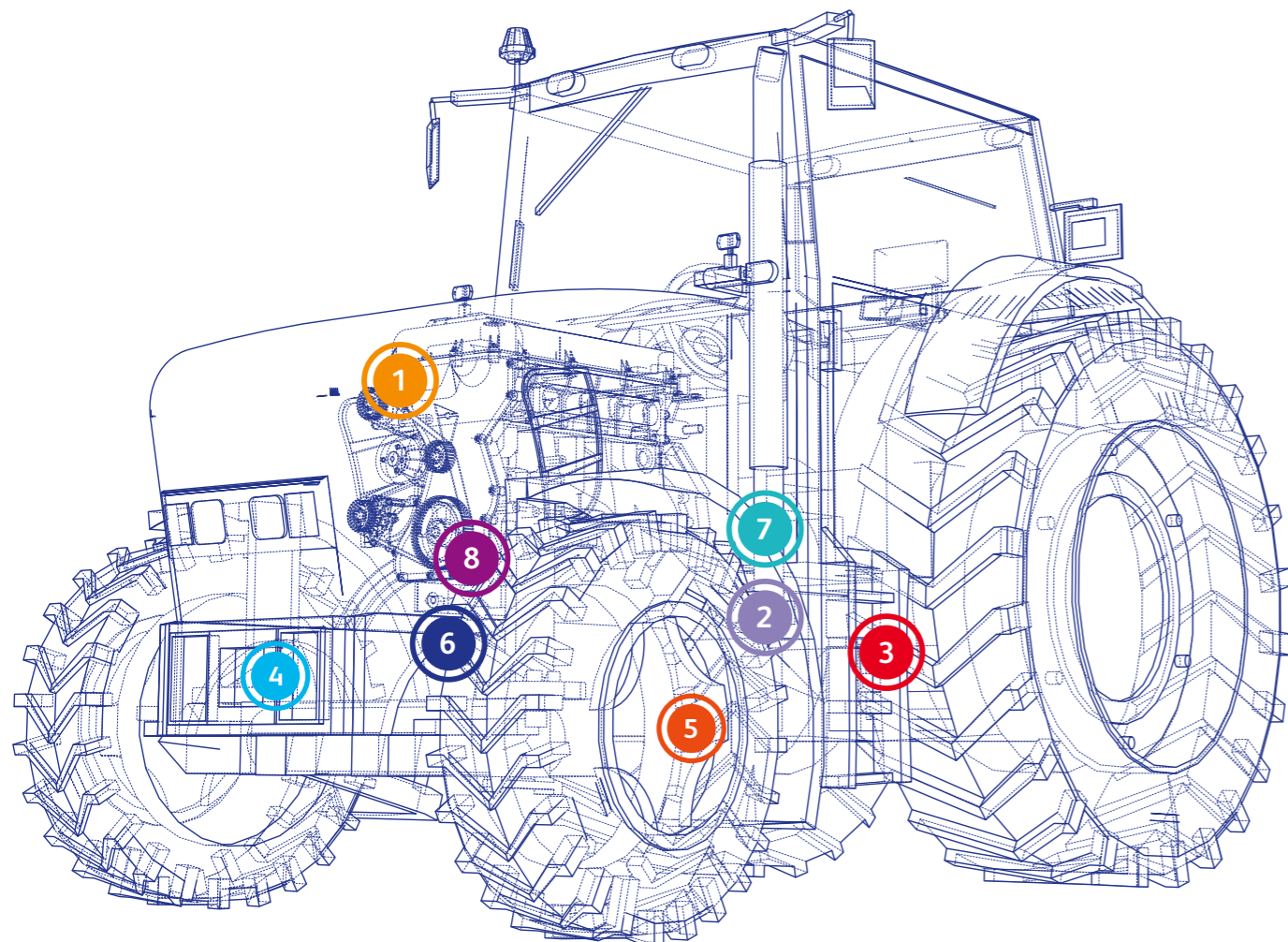
Q8Oils understands that operating conditions vary significantly, and we are here to offer expert advice on selecting the most suitable oil for your specific application. Through our Q8 Routine Analysis Service (QRAS), customers can extend the lifespan of their engines or machines, reduce operating costs, and optimize their lubrication program. Regular oil analyses help prevent potential severe damage or breakdowns by identifying issues and providing insights into the necessary actions to be taken and their urgency, as interpreted by our team of experts.



Benefits

- Access your results online anytime for your convenience.
- Get recommendations from our technical expert support team regarding your oil condition & engine wear.
- Receive an in-depth report encompassing all pertinent details, including historical data, oil sample analysis, machine condition, and more.

- 1 ENGINE OILS
- 2 AUTOMATIC TRANSMISSION FLUIDS
- 3 AXLE & GEAR OILS
- 4 COOLANTS
- 5 BRAKE FLUIDS
- 6 POWER STEERING FLUIDS
- 7 TRACTOR TRANSMISSION FLUIDS
- 8 HYDRAULIC FLUIDS
- 9 GREASES



AGRICULTURAL OILS

Agricultural Oils Product range

| | |
|-------------------------------------|----|
| Engine Oils | 10 |
| Automatic Transmission Fluids | 15 |
| Axle & Gear Oils | 19 |
| Coolants | 23 |
| Brake Fluids | 26 |
| Power Steering Fluids | 27 |
| Tractor Transmission Fluids | 28 |
| Hydraulic Fluids | 36 |
| Greases | 38 |

Engine Oils



Q8 Terra 8000 LONG DRAIN FE 10W-30

| Specifications | Approvals | Recommendation |
|--|--|--|
| ACEA E11 ACEA E6 ACEA E7 ACEA E9 API CJ-4 API CK-4 API SN Iveco 18-1804 TLS E9 JASO DH-2 | Daimler Truck AG DTFR 15C110 (MB 228.51) Daimler Truck AG DTFR 15C120 (MB 228.52) Deutz DQC IV-18 LA MAN M 3677 MAN M 3775 Mack EO-S 4.5 Renault RLD-3 Scania LA (Low Ash) Volvo VDS-4.5 | ACEA E8 Caterpillar ECF-1a Caterpillar ECF-2 Caterpillar ECF-3 Cummins CES 20086 DAF Extended Drain DAF PSQL 2.1E DAF PSQL 2.1E LD Daimler Truck AG DTFR 15C100 (MB 228.31) Detroit Diesel DFS 93K222 Liebherr LH-00-ENG LA Liebherr LH-00-ENG3A LA MAN M 3477 MB 226.9 MB 227.61 MTU Type 3.1 Renault RGD Renault RLD-4 Volvo CNG Volvo VDS-3 Volvo VDS-4 |

Engine Oils

Q8 Terra 8000 LONG DRAIN FE 5W-30

| Specifications | Approvals | Recommendation |
|---|---|---|
| ACEA E11 ACEA E6 ACEA E7 ACEA E8 ACEA E9 API CJ-4 API CK-4 API SN Iveco 18-1804 TLS E9 JASO DH-2 | Cummins CES 20086 Daimler Truck AG DTFR 15C100 (MB 228.31) Daimler Truck AG DTFR 15C110 (MB 228.51) Deutz DQC IV-18 LA MAN M 3677 MB 228.31 MB 228.51 MTU Type 3.1 Mack EO-S 4.5 Renault RLD-3 Scania LDF-4 Volvo VDS-4.5 Daimler Truck AG DTFR 15C120 (MB 228.52)* | Caterpillar ECF-3 Cummins CES 20081 DAF Extended Drain DAF PSQL 2.1E DAF PSQL 2.1E LD Daimler Truck AG DTFR 15D100 (MB 227.61) Detroit Diesel DFS 93K222 Deutz DQC IV-10 LA Ford M2C213-A1 Iveco 18-1804 TLS E6 Iveco 18-1809 NG2 Liebherr LH-00-ENG LA Liebherr LH-00-ENG5C LA MAN M 3271-1 MAN M 3477 MAN M 3691 MAN M 3775 MB 226.9 MB 227.61 Renault RGD Renault RLD-4 Renault RLD-5 Renault RXD Scania LA (Low Ash) Volvo CNG Volvo VDS-5 |

Q8 Terra 8000 LONG DRAIN 10W-40

| Specifications | Approvals | Recommendation |
|---|---|--|
| ACEA E11 ACEA E6 ACEA E7 ACEA E8 ACEA E9 API CK-4 API SN JASO DH-2 | Daimler Truck AG DTFR 15C100 (MB 228.31) Daimler Truck AG DTFR 15C110 (MB 228.51) Daimler Truck AG DTFR 15C120 (MB 228.52) Deutz DQC IV-18 LA MB 228.31 MB 228.51 MB 228.52 Mack EO-S 4.5 Renault RLD-3 Volvo VDS-4.5 Cummins CES 20086 MAN M 3775 | Caterpillar ECF-3 Cummins CES 20081 DAF Extended Drain Detroit Diesel DFS 93K218 Iveco 18-1804 TLS E6 Iveco 18-1804 TLS E9 Liebherr LH-00-ENG LA Liebherr LH-00-ENG3A LA Liebherr LH-00-ENG5C LA MAN M 3271-1 MAN M 3277 MAN M 3477 MTU Type 2.1 MTU Type 3.1 Mack EO-O Premium Plus Renault RGD Scania LA (Low Ash) Volvo CNG Volvo VDS-4 |

Q8 Terra 7000 FE 10W-30

| Specifications | Approvals | Recommendation |
|---|--|---|
| ACEA E11 ACEA E7 ACEA E9 API CI-4 API CI-4+ API CJ-4 | API CK-4 JASO DH-2* Cummins CES 20086 Daimler Truck AG DTFR 15C100 (MB 228.31) Deutz DQC III-18 LA MAN M 3775 MTU Type 2.1 Mack EO-S 4.5 Renault RLD-3 Volvo VDS-4.5 | API SN Allison TES-439 Case New Holland MAT 3571 Caterpillar ECF-3 Cummins CES 20081 Detroit Diesel DFS 93K218 Detroit Diesel DFS 93K222 Ford M2C171-F1 Hino Isuzu MAN M 3271-1 MAN M 3575 MB 226.9 Mack EO-O Premium Plus Renault RGD Tata UD Trucks Volvo CNG Volvo VDS-4 |

Q8 Terra 7000 10W-40

| Specifications | Approvals | Recommendation |
|---|---|---|
| ACEA E11 ACEA E7 ACEA E9 API CI-4 API CI-4+ API CJ-4 | API CK-4 JASO DH-2* DTFR 15C100 Daimler Truck AG DTFR 15C100 (MB 228.31) Deutz DQC III-18 LA MAN M 3775 Mack EO-S 4.5 Renault RLD-3 Volvo VDS-4.5 | API SN Allison TES-439 Case New Holland MAT 3571 Caterpillar ECF-3 Cummins CES 20081 Cummins CES 20086 Detroit Diesel DFS 93K218 Detroit Diesel DFS 93K222 Ford M2C171-F1 Hino Isuzu Liebherr LH-00-ENG3A LA MAN M 3271-1 MAN M 3575 MB 226.9 MTU Type 2.1 Mack EO-O Premium Plus Renault RGD Tata UD Trucks Volvo CNG Volvo VDS-4 |

Q8 Terra 7000 15W-40

| Specifications | Approvals | Recommendation |
|---|--|---|
| ACEA E11 ACEA E7 ACEA E9 API CI-4 API CI-4+ API CJ-4 | API CK-4 JASO DH-2* Cummins CES 20086 Daimler Truck AG DTFR 15C100 (MB 228.31) Deutz DQC III-18 LA MAN M 3775 Mack EO-S 4.5 Renault RLD-3 Volvo VDS-4.5 | API SN Allison TES-439 Case New Holland MAT 3571 Caterpillar ECF-3 Cummins CES 20081 DAF LPG engines Detroit Diesel DFS 93K218 Detroit Diesel DFS 93K222 Ford M2C171-F1 Hino Isuzu Liebherr LH-00-ENG3A LA MAN M 3271-1 MAN M 3575 MB 226.9 MTU Type 2.1 Mack EO-O Premium Plus Renault RGD Tata UD Trucks Volvo CNG Volvo VDS-4 |

Q8 Terra 6600 10W-40

| Specifications | Approvals | Recommendation |
|---|---|--|
| ACEA E4 ACEA E7 API CG-4 API CH-4 API CI-4 Global DHD-1 JASO DH-1 | Daimler Truck AG DTFR 15B120 (MB 228.5) MAN M 3277 MTU Type 3 Mack EO-N Renault RLD-2 Tedom 258-4 Volvo VDS-3 | Caterpillar ECF-1a Cummins CES 20077 Cummins CES 20078 DAF Extended Drain Deutz DQC IV-18 Ford M2C944-A Liebherr LH-00-ENG5C Mack EO-M Plus SDMO - Kohler KD engine series K135 & K175 |

Q8 Terra 6000 10W-40

| Specifications | Approvals | Recommendation |
|---|--|--|
| ACEA E7 API CF API CI-4 API SL Global DHD-1 | Daimler Truck AG DTFR 15B110 (MB 228.3) Deutz DQC III-10 MB 228.3 MTU Type 2 Mack EO-N Renault RLD-2 Volvo VDS-3 | Caterpillar ECF-1 Caterpillar ECF-2 Cummins CES 20071 Cummins CES 20072 Cummins CES 20076 Cummins CES 20077 Cummins CES 20078 DAF Isuzu Iveco MAN M 3275-1 Renault RLD Scania Tedom 258-3 |

Q8 Terra 6000 15W-40

| Specifications | Approvals | Recommendation |
|---|---|--|
| ACEA E7 API CF API SL Global DHD-1 | API CI-4 Cummins CES 20078 Deutz DQC III-10 DTFR 15B110 (MB 228.3) MAN M 3275-1 MB 228.3 MTU Type 2 Mack EO-N Renault RLD-2 Tedom 258-3 Volvo VDS-3 | Caterpillar ECF-1a Caterpillar ECF-2 Cummins CES 20071 Cummins CES 20072 Cummins CES 20076 Cummins CES 20077 DAF Isuzu Iveco MB-Approval 228.3 Renault RLD SDMO - Kohler KD engine series K135 & K175 Scania ZF TE-ML 07C |

* Pending approval ** Coming soon

Automatic Transmission Fluids



Q8 Auto ATF 668A

| Specifications | Approvals | Recommendation |
|----------------|-------------|----------------|
| | Allison 668 | |



Q8 Auto 26 R

| Specifications | Approvals | Recommendation |
|----------------|----------------------|---|
| | Voith 3.90 -8e_ 1997 | Voith Hydrodynamic brakes Voith Turbo 3625-006072 (Type S/TP/DTP/VIR) Voith Turbo 3625-006073 (Type R) Voith Turbo Couplings |

Q8 Auto 15 S

| Specifications | Approvals | Recommendation |
|----------------|---|---|
| | Voith H55.6336.xx ZF TE-ML 16S ZF TE-ML 20C ZF TE-ML 25C | Allison TES-295 Allison TES-389 Allison TES-468 GM Dexron III G Iveco 18-1807 AG3/I Iveco 18-1807 AG3/IV MAN 339 Type V2 MAN 339 Type Z3 MB 236.91 Voith US SB 013/118 ZF TE-ML 14C |

Q8Oils Portfolio of Agricultural Engine Oils

offers a wide choice of qualities:


Fuel saving

Q8 Terra range offers fuel savings of 0,5% up to 3,3% in on- and off highway applications.


Low SAPS

The Q8 Terra range is based on low SAPS technology. This gives the required protection for after treatment system like DPF, EGR and SCR.


Durability and wear protection

The Q8 Terra range offers long drain and high oxidation stability and wear protection.



Q8 Auto D VI

| Specifications | Approvals | Recommendation | |
|---------------------------------------|---------------------------------|--|--|
| BMW/MINI T-IV Volvo 97342 (AT 102) | GM Dexron III H GM Dexron VI | "AML Oil No. 4G43A9A509/AA/S ATF RED 1 ATF RED 1K Acura ATF-Z1 Aisin Warner JWS 3309 (T-IV) Aisin Warner JWS 3324 (WS) Aisin Warner JWS AW-1 Aisin Warner JWS AW-2 Allison C-3 Allison C-4 Allison TES-389 Allison TES-468 American Motors ATF +3 (MS7176-E) Audi 5 HP LT71141 Audi ZF 5 HP 18FL Audi ZF 5 HP 19FL Audi ZF 5 HP 24A BMW/MINI 7045E BMW/MINI 83 22 0 026 922 BMW/MINI 83 22 0 397 114 BMW/MINI 83 22 0 403 249 BMW/MINI ATF 2 BMW/MINI ATF 3+ BMW/MINI ATF 6 BMW/MINI ATF 7 BMW/MINI BMW LT71141 (ZF 5 HP 18FL/19FL/24A) BMW/MINI ETL 8072B BMW/MINI JWS 3309 (T-IV) BMW/MINI LA 2634 BMW/MINI ZF 5 HP 19FL BMW/MINI ZF 5 HP 24A BMW/MINI ZF 5 HP 30 BMW/MINI ZF 5HP18FL BMW/MINI ZF HP 24 Bentley PY112995PA Bosch TE-ML 09 Caterpillar TO-2 Chrysler ATF+ Chrysler ATF+2 Chrysler ATF+3 Chrysler ATF+4 Chrysler JWS 3309 Chrysler MOPAR AS 68 RC (T-IV) Chrysler MOPAR AS 69 RC (T-IV) Chrysler MOPAR SP IV Chrysler NAG-1 Chrysler P-N 68049954AA Chrysler P-N 68171869AA Chrysler P-N 68218925AB Chrysler P/N 05127382AA Chrysler P/N 68043742AA Chrysler P/N 68157995AA Chrysler P/N 68157995AB Chrysler P/N 68171866AA Chrysler P/N 68218925AA Daewoo LT71141 Daihatsu Ammix ATF D-II Daihatsu Ammix ATF D-III SP Esso LT 71141 | Fiat 9.55550-AV2 Fiat 9.55550-AV3 Fiat 9.55550-AV5 Fiat 9.55550-AV6 Fiat JWS 3309 T-IV Ford ATF C-ML5 Ford EAP -M2C166H Ford FNR5 Ford JWS 3309 Ford M2C138-CJ Ford M2C166-H Ford M2C922-A1 Ford M2C924-A (XT-8-QAW) Ford M2C938-A (Mercon LV) Ford Mercon Ford XL-12 Ford XT-2-QDX (M) Ford XT-2-QSM (S) Ford XT-6-DSP Ford XT-8-QAW Ford XT-9-QMM5 Fuso ATF-A4 Fuso ATF-II Fuso ATF-SPIII GM 1940700 GM 1940700 GM 1940767 GM 1940767 GM 21005966 (Transaxle) GM 21005966 (Transaxle) GM 22717466 GM 88863400 GM 88863401 GM 88900925 GM 88900925 GM 93160393 GM 9986195 (Aisin AW, JWS 3309) GM 9986195 (Aisin AW, JWS 3309) GM ATF Type A (Suffix A) GM AW1 GM Dexron II GM Dexron II D GM Dexron II E GM Dexron III GM Dexron III F GM Dexron III G GM TASA GM Transfer Case (Auto Trak II) Hino Blue Ribon ATF Honda ATF Ultra II Honda DW-1 Honda Type 3.0 Honda Type 3.1 Honda Type 3.1 (08200-9017 USA) Honda Type 3.1 (08263-999-01HE (EU)) Honda Z-1 (except in CVT) Hyundai/Kia 040000C90SG Hyundai/Kia 040000C90SG Hyundai/Kia Dex-II |



Hyundai/Kia JWS 3314
Hyundai/Kia NUMM040 CH20 Red-1
Hyundai/Kia NWS-9638
Hyundai/Kia SP-II
Hyundai/Kia SP-III (except in CVT's)
Hyundai/Kia SP-IV
Hyundai/Kia SP-IV M
Hyundai/Kia SP-IV RR
Hyundai/Kia SP4-M
Hyundai/Kia SPH-IV
Idemitsu K17 3100 PL085
Isuzu ATF WSI
Isuzu Besco 08200-9001
Isuzu Besco ATF SP
Isuzu Besco ATF-II
Isuzu Besco ATF-III
JASO M315 Type 1A
JASO M315 Type 1A LV
JASO M315 Type 2A
Jaguar Land Rover 02JDE26444
Jaguar Land Rover ATF 3403 M115
Jaguar Land Rover ATF LT71141 (ZF 5HP24)
Jaguar Land Rover Fluid 8432
Jaguar Land Rover JLM 20238
Jaguar Land Rover JLM 20292
Jaguar Land Rover K17
Jaguar Land Rover LR0022460
Jaguar Land Rover LR023288
Jaguar Land Rover M2C 922-A1
Jaguar Land Rover TYK500050
Jeep ATF +3
Lexus JWS 3309
MAN 339 Type A
MB 236.12
MB 236.14
MB 236.15
MB 236.17
MB 236.3
MB 236.41
MB ZF 4HP20
Maserati P/N 231603
Mazda ATF 3317
Mazda ATF A7
Mazda ATF D-II
Mazda ATF F-1
Mazda ATF FZ
Mazda ATF M-III
Mazda ATF M-V
Mazda ATF N-1
Mazda ATF S-1
Mitsubishi Diaqueen ATF MA1
Mitsubishi Diaqueen ATF PA
Mitsubishi Diaqueen AW
Mitsubishi Diaqueen J2
Mitsubishi Diaqueen J3
Mitsubishi Diaqueen SK
Mitsubishi Diaqueen SP-II
Mitsubishi Diaqueen SP-III (except in CVT's)

Mitsubishi Diaqueen SP-IV
Nissan Matic C
Nissan Matic D
Nissan Matic G
Nissan Matic J
Nissan Matic K
Nissan Matic P
Nissan Matic S
Nissan Matic W
PSA 9730.AE (AL4 automatic gearbox)
PSA B71 2340
PSA P-N 16 350 56 080
PSA Z 000169756
Porsche ATF 3403-M115
Porsche LT71141 (ZF 5HP19FL, 5HP20)
Porsche P/N 000 043 205 09
Porsche P/N 000 043 205 28
Porsche P/N 999 917 547 00
Porsche T-IV (JWS 3309)
Porsche Z 000169756
Renault DPO/AL4
Renault Matic D2
Renault Samsung SATF-D
Saab P-N 45 30 09 800
Saab P-N 93 160 548
Saab P/N 93 160 393
Saab P/N 93 165 147
Saab T-IV (JWS 3309)
Saturn T-IV (JWS 3309)
Scion (all vehicles)
Shell 3403
Shell L 12108
Shell LA 2634
Shell M-1375.4
Shell M115
Ssang Yong DSIH 5M-66
Subaru ATF-5AT
Subaru ATF-AW
Subaru ATF-HP
Subaru Dexron II
Subaru K0710Y0700
Subaru Opel Original ATF 09117946
Subaru Opel Original ATF 93160393
Suzuki AT OIL 5D06
Suzuki ATF 2326
Suzuki ATF 2384K
Suzuki ATF 3309
Suzuki ATF 3314
Suzuki ATF 3317
Suzuki ATF 3317
Suzuki ATF AW-1
Texaco 7045E
Texaco 8072B
Texaco N402
Toyota ATF WS including Toyota hybrid system
Toyota D-II
Toyota D-III
Toyota Hybrid

Toyota T-I
Toyota T-II
Toyota T-III
Toyota T-IV
VAG LT 71141 (ZF SHP 18FL/19FL/24A)
VAG VW G 052 025
VAG VW G 052 055
VAG VW G 052 162 ((ZF LifeguardFluid 5)
VAG VW G 052 533
VAG VW G 052 990
VAG VW G 052 990
VAG VW G 053 001
VAG VW G 053 025
VAG VW G 055 005 (ZF LifeguardFluid 6)
VAG VW G 055 025 (JWS 3309)
VAG VW G 055 162 (ZF LifeguardFluid 6 Plus)
VAG VW G 055 540
VAG VW G 060 162 (ZF LifeguardFluid 8)
VAG VW G US 000 162
VAG VW TL 521 62
VAG VW TL 521 62
Vickers I-286-S
Vickers M2950-S
Voith H55.6335.xx
Voith Svc Bltn #013
Voith Svc Bltn #118
Volvo 97325
Volvo 97335
Volvo 97342 (AT 102)
Volvo CE 97340
Volvo P-N 1161521
Volvo P/N 1161540
Volvo P/N 1161621
Volvo P/N 1161640
Volvo P/N 31256675
Volvo P/N 31256675
Volvo P/N 31256774
ZF 3HP
ZF 4HP
ZF 5HP
ZF 6HP
ZF 8HP
ZF 9HP
ZF LifeguardFluid 5
ZF LifeguardFluid 6
ZF LifeguardFluid 6 Plus
ZF LifeguardFluid 8
ZF No. S671 090 170 (LGF 5)
ZF No. S671 090 281 (LGF 6 plus)
ZF No. S671 090 312 (LGF 8)
ZF No. S671 090 255 (LGF 6)
ZF TE-ML 05L
ZF TE-ML 09
ZF TE-ML 11A
ZF TE-ML 11B
ZF TE-ML 21L"



Q8 Auto 15 ED

| Specifications | Approvals | Recommendation |
|----------------|---|---|
| | MAN 339 Type L1 MAN 339 Type V2 MAN 339 Type Z2 Voith H55.6336.xx Voith US SB 013/118 Volvo 97341 (AT 101) ZF TE-ML 04D ZF TE-ML 14B DTFR 13C170 (MB 236.1)* DTFR 13C170 (MB 236.9)* | Allison C-4 Allison TES-389 Chrysler ATF+3 Ford Mercon GM ATF Type A (Suffix A) GM Dexron III GM Dexron III G GM Dexron III H MB 236.10 MB 236.11 MB 236.5 MB-Approval 236.1 Voith H55.6335.xx ZF 4HP ZF 6HP ZF TE-ML 02F ZF TE-ML 03D ZF TE-ML 09 ZF TE-ML 16L ZF TE-ML 17C |

Q8 Auto 14

| Specifications | Approvals | Recommendation |
|---|---|--|
| Ford M2C138-CJ Ford M2C166-H Ford M2C185-A Ford M2C186-A Ford SQM-2C9010-A Ford SQM-2C9010-B GM 6137M | MAN 339 Type L2 MAN 339 Type V1 MAN 339 Type Z1 Voith H55.6335.xx Voith US SB 013/118 ZF TE-ML 04D ZF TE-ML 14A | Allison C-4 Caterpillar TO-2 Chrysler MS-6704A Clark TLC-25 3M 8-83 GM Dexron II D Iveco 18-1807 AG2 Komatsu Dresser B22-0004 MB 236.1 MB 236.5 MB 236.7 MB-Approval 236.1 VME Americas EEMS 19088G Volvo 97325 Volvo 97335 Volvo 97340 ZF TE-ML 02F ZF TE-ML 03D ZF TE-ML 09 ZF TE-ML 17C |

Q8 Auto 16

| Specifications | Approvals | Recommendation |
|----------------|-----------|---|
| | | Ford M2C33-F Ford M2C33-G Ford SQM-2C9007-AA John Deere JDM J21A Volvo 97301 Volvo 97330 |

Axle & Gear Oils



Q8 Trans XGS 75W-90

| Specifications | Approvals | Recommendation |
|--|--|---|
| API GL-4 API GL-5 API MT-1 MIL L-2105D MIL PRF-2105E | Daimler Truck AG DTFR 12B140 (MB 235.9)* Scania STO 1:1 G* MAN 341 Type Z2 MAN 342 Type S1 MB-Approval 235.8 SAE J 2360 Scania STO 1:0 Scania STO 2:0 A FS Volvo 97312 ZF TE-ML 02B ZF TE-ML 05A ZF TE-ML 12L ZF TE-ML 12N ZF TE-ML 16F ZF TE-ML 17B ZF TE-ML 19C ZF TE-ML 21A | Daimler Truck AG DTFR 12B100 (MB 235.0) Detroit Diesel DFS 93K219.01 Ferrari GL-4 Ferrari GL-5 Iveco 18-1805 RAS1 MAN 341 Type E3 MAN 341 Type GA1 MAN 342 Type M2 MAN 342 Type M3 MB 235.0 Mack GO-J Scania STO 2:0 A Scania STO 2:0 G VAG VW G 052 911 ZF TE-ML 24A |

Q8 Trans XGN 75W-90

| Specifications | Approvals | Recommendation |
|---|-----------|---|
| API GL-4 API GL-5 API MT-1 MIL PRF-2105E SAE J 2360 | | Iveco 18-1805 RAS1 MAN 341 Type E3 MAN 341 Type Z2 MAN 342 Type M3 MAN 342 Type S1 MB 235.8 Scania STO 1:0 Scania STO 1:1 G Scania STO 2:0 A Scania STO 2:0 G Volvo 97312 ZF TE-ML 02B ZF TE-ML 05A ZF TE-ML 12L ZF TE-ML 12N ZF TE-ML 16F ZF TE-ML 17B ZF TE-ML 19C ZF TE-ML 21A |

Q8 Axle Oil XG 80W-140

| Specifications | Approvals | Recommendation |
|---|--|----------------|
| API GL-4 API GL-5 API MT-1 MIL PRF-2105E SAE J 2360 | Scania ST0 1:0 ZF TE-ML 05A ZF TE-ML 12M ZF TE-ML 16D ZF TE-ML 21A | |

Q8 Axle Oil GL-5 75W-90

| Specifications | Approvals | Recommendation |
|-------------------------|-----------|--|
| API GL-5 MIL L-2105D | | ZF TE-ML 05A ZF TE-ML 16B ZF TE-ML 17B ZF TE-ML 19B |

Q8 Axle Oil TP 80W-90

| Specifications | Approvals | Recommendation |
|----------------|-----------|--|
| API GL-5 LS | | John Deere JDM J20C John Deere JDQ-96 |

Q8 T 45 LS SAE 85W-140

| Specifications | Approvals | Recommendation |
|----------------------------|-----------|---|
| API GL-5 LS MIL L-2105D | | Ford M2C119-A Ford M2C154-A GM 1942382 (90006326) Hanomag Specification 511 Volvo 97311 ZF TE-ML 05C ZF TE-ML 12C ZF TE-ML 16E ZF TE-ML 21C |

Q8 T 45 LS SAE 90

| Specifications | Approvals | Recommendation |
|----------------------------|------------------------------|---|
| API GL-5 LS MIL L-2105B | ZF TE-ML 05C ZF TE-ML 21C | Ford M2C119-A Ford M2C154-A GM 1942382 (90006326) GM 1942387 Hanomag Specification 511 Volvo 97311 ZF TE-ML 12C ZF TE-ML 16E |

Q8 T 55 80W-90

| Specifications | Approvals | Recommendation |
|--|--|---|
| API GL-5 British Ministry of Defence CS 3000B MIL L-2105B MIL L-2105D | ZF TE-ML 16B ZF TE-ML 17B ZF TE-ML 19B ZF TE-ML 21A | Case MS 1316 Clark ALC-1 5M 7-80 KE Clark MS-8 Rev. 1 Clark TLC-25 3M 8-83 Eaton/Fuller Bulletin 2052 Eaton/Fuller Bulletin 2053 Eaton/Fuller Bulletin 6007 Eaton/Fuller Form 121 Ford SM-2C-1011A Ford SQM-2C9002-AA GM 8863370 Iveco 18-1805 RAM1 John Deere JDM J11D John Deere JDM J11E Komatsu Dresser B22-0003 Komatsu Dresser B22-0005 MAN 342 Type M1 MB 235.0 Rockwell International O-76 VME Americas EEMS 19003F Volvo 97310 ZF TE-ML 05A ZF TE-ML 07A ZF TE-ML 12A ZF TE-ML 16C |

Q8 T 55 85W-140

| Specifications | Approvals | Recommendation |
|--|------------------------------|---|
| API GL-5 British Ministry of Defence CS 3000B MIL L-2105B MIL L-2105D | ZF TE-ML 16D ZF TE-ML 21A | Case MS 1316 Clark ALC-1 5M 7-80 KE Clark MS-8 Rev. 1 Clark TLC-25 3M 8-83 Eaton/Fuller Bulletin 2052 Eaton/Fuller Bulletin 2053 Eaton/Fuller Bulletin 6007 Eaton/Fuller Form 121 Ford SM-2C-1011A Ford SQM-2C9002-AA GM 8863370 Iveco 18-1805 RAM2 John Deere JDM J11D John Deere JDM J11E Komatsu Dresser B22-0003 Komatsu Dresser B22-0005 MAN 342 Type M1 MB 235.0 Rockwell International O-76 VME Americas EEMS 19003F Volvo 97310 ZF ZF TE-ML 05A ZF TE-ML 07A ZF TE-ML 12A ZF TE-ML 16B ZF TE-ML 16C ZF TE-ML 17B ZF TE-ML 19B |

Q8 T 65 75W-90

| Specifications | Approvals | Recommendation |
|----------------|-------------------|--|
| API GL-5 | Tatra TDS 100/40* | Clark ALC-1 5M 7-80 KE Clark TLC-25 3M 8-83 Eaton/Fuller Bulletin 2052 Eaton/Fuller Bulletin 2053 Eaton/Fuller Form 121 Ford M2C175-A Ford M2C210-A GM 1940759 (90188629) MB 235.0 Rockwell International O-76-E Volvo 97312 (<2013) ZF TE-ML 05A ZF TE-ML 07A ZF TE-ML 12A ZF TE-ML 17B |

Q8 T 65 LS 75W-90

| Specifications | Approvals | Recommendation |
|---|-----------|--|
| API GL-5 LS MIL L-2105D Volvo 97311 | | "Fiat 9.55550-DA9 Ford M2C119-A Ford M2C154-A GM 1942382 (90006326) Hanomag Specification 511 VAG VW G 055 145 ZF TE-ML 05D ZF TE-ML 12D ZF TE-ML 21C" |

Q8 Gear Oil XG 80W-90

| Specifications | Approvals | Recommendation |
|------------------------------------|--|--|
| API GL-4 API GL-5 SAE J 2360 | MAN 341 Type Z2 MAN 342 Type M2 Scania STO 1:0 ZF TE-ML 02B ZF TE-ML 05A ZF TE-ML 12L ZF TE-ML 12M ZF TE-ML 16B ZF TE-ML 17H ZF TE-ML 19C ZF TE-ML 21A | API MT-1 Iveco 18-1807 MG Iveco 18-1807 MGM MAN 341 Type E2 ZF TE ML 07A ZF TE-ML 17B |

Coolants



Q8 Antifreeze OAT-2

| Specifications | Approvals | Recommendation |
|--|--|--|
| ASTM D 3306 ASTM D 6210 GB 29743-2013 JIS K 2234 UNE 26-361-88/1 | Volvo Construction Equipment VCS-2* Volvo Penta VCS-2* Volvo Trucks VCS-2* | Case New Holland Case New Holland MAT 3624 Caterpillar GCM34 Deutz DQC CB-14 Fiat 9.55523 Ford M97B44-D GM Jaguar Land Rover Komatsu KES 07.892 MAN 324 Type SNF MB 325.3 MB 326.3 VAG VW TL 774 D (G12) VAG VW TL 774 F (G12+) |

Q8 Antifreeze Long Life Premixed

| Specifications | Approvals | Recommendation |
|---|--|--|
| ASTM D 3306 ASTM D 4656 ASTM D 4985 ASTM D 6210 Afnor NF R 15-601 Bergen engines 2.13.01 Case New Holland MAT 3624 Claas DAF 74002 Deutz DQC CB-14 FVV Heft R 443 Ford M97B44-D Foton Q-FPT 2313005-2013 INNIO Jenbacher TA 1000-0201 JIS K 2234 Jaguar Land Rover STJLR.651.5003 (CMR 8229) John Deere JDM H5 KSM 2142 Komatsu KES 07.892 Leyland Trucks DW03245403 Liebherr MD1-36-130 MAN B&W AG D36 5600 MIL-Belgium BT-PS-606 A MIL-France DCSEA 615/C MIL-Italy E/L-1415b MIL-Norway FS 6850-0951 MIL-Sweden FSD 8704 MWM 0199-99-2091/12 Mack 014 GS 17009 Mazda MEZ MN 121 D Mitsubishi MHI NATO S-759 Renault 41-01-001/S Type D SACM Diesel DLP799861 SAE J 1034 UNE 26-361-88/1 VAG VW TL 774 D (G12) VAG VW TL 774 F (G12+) Waukesha Wärtsilä Önorm V5123 | MAN 324 Type SNF Cummins CES 14439 Cummins IS series U N14 | Aston Martin BS 6580 Behr Cummins CES 14603 Detroit Diesel 93K217 Fendt Fendt Fiat 9.55523 Ford M97B44-E Great Wall Hitachi Isuzu Karosa Kobelco MB 326.3 Opel/Vauxhall GMW 3420 Proton SEMT Pielstick Saab B 040 1065 Sanata Motors Tedom Thermo King VAG Škoda 61-0-0257 Valtra Van Hool Volvo Volvo Penta Volvo Construction Equipment Volvo Penta Volvo Trucks Yanmar |

Q8 Antifreeze Extended Life Premixed

| Specifications | Approvals | Recommendation |
|---|-----------|----------------|
| AS 2108-2004 ASTM D 3306 CUNA NC 956-16 CUNA NC 956-18 (Except RA) GB 29743-2013 SAE J 1034 UNE 26-361-88/1 | | |

Q8 Antifreeze Extended Life

| Specifications | Approvals | Recommendation |
|---|-----------|----------------|
| AS 2108-2004 ASTM D 3306 CUNA NC 956-16 CUNA NC 956-18 (Except RA) GB 29743-2013 SAE J 1034 UNE 26-361-88/1 | | |

Q8 Antifreeze Long Life

| Specifications | Approvals | Recommendation |
|--|--|---|
| ASTM D 3306 ASTM D 4656 ASTM D 4985 ASTM D 6210 Afnor NF R 15-601 Bergen engines 2.13.01 Case New Holland MAT 3624 Cummins CES 14439 Cummins CES 14603 DAF 74002 Detroit Diesel 93K217 FVV Heft R 443 Ford Ford M97B44-D Foton Q-FPT 2313005-2013 INNIO Jenbacher TA 1000-0201 JIS K 2234 Jaguar Land Rover STJLR.651.5003 (CMR 8229) John Deere JDM H5 KSM 2142 Komatsu KES 07.892 Leyland Trucks DW03245403 Liebherr MD1-36-130 MAN B&W AG D36 5600 MIL-Belgium BT-PS-606 A MIL-France DCSEA 615/C MIL-Italy E/L-1415b MIL-Norway FS 6850-0951 MIL-Sweden FSD 8704 MTU MTL 5048 MWM 0199-99-2091/12 Mack 014 GS 17009 Mazda MEZ MN 121 D Mitsubishi MHI NATO S-759 Opel/Vauxhall GMW 3420 Renault 41-01-001/S Type D SACM Diesel DLP799861 SAE J 1034 Saab B 040 1065 UNE 26-361-88/1 VAG VW TL 774 D (G12) VAG Škoda 61-0-0257 VW/Audi TL-774 D= G12 Volvo Trucks Wärtsilä | Deutz DQC CB-14 MAN 324 Type SNF Tedom | Aston Martin BS 6580 Behr Caterpillar Claas Fendt Fiat 9.55523 Ford M97B44-E Great Wall Hitachi Isuzu Karosa Kobelco MB 325.3 Proton SEMT Pielstick Sanata Motors Thermo King VAG VW TL 774 F (G12+) Valtra Van Hool Volvo Volvo Penta Volvo Construction Equipment Volvo Penta Waukesha Yanmar Önorm V5123 |

Brake Fluids



Q8 Brake Fluid DOT 4+

| Specifications | Approvals | Recommendation |
|--|-----------|----------------|
| FMVSS 116 DOT 3 FMVSS 116 DOT 4 ISO 4925 Class 4 JIS K 2233 Class 4 SAE J 1703 SAE J 1704 | | |

Power Steering Fluids



Q8 CHF 22S

| Specifications | Approvals | Recommendation |
|---|-----------|--|
| DIN 51524-3 HVLP ISO 7308 PSA S71 2710 VAG VW TL 521 46 Volvo STD 1273.36 | | Fiat 9.55550-SA1 Ford 204-A1 Ford M2C204-A2 MAN M 3289 MB 345.0 PSA 9735-EJ Renault PSF Class 1 Volvo P-N 1161529 Volvo P-N 1161529 Volvo WSS-MWC204A |

Q8 LHM+

| Specifications | Approvals | Recommendation |
|--------------------------|-----------|----------------|
| ISO 7308 PSA B71 2710 | | |

Q8 PSF 32S

| Specifications | Approvals | Recommendation |
|----------------|-----------|---|
| | | Bosch TE-ML 09 Fiat 9.55550-AG2 GM Dexron III Honda PSF-1 Honda PSF-S Honda PSF-V MB 236.3 Volvo 97325 |

Tractor Transmission Fluids




Q8 TERRA 4000 CVT LV 10W-30

| Specifications | Approvals | Recommendation |
|----------------|---------------|---|
| API GL-4 | ZF TE-ML 06N* | "AGCO CVT ML 200 Case MS 1207 Case MS 1209 Case MS 1210 Case New Holland MAT 3505 Case New Holland MAT 3525 Case New Holland MAT 3540 Caterpillar SATO Claas CVT Deutz Allis AC Power Fluid 821 XL Fendt Vario John Deere Hygard John Deere JDM J20C Komatsu KES 07.866 Kubota UDT Kubota UDT-HD Massey Ferguson CMS M 1135 Massey Ferguson CMS M 1141 Massey Ferguson CMS M 1143 Massey Ferguson CMS M 1145 New Holland NH 410-B New Holland NH 410-C Same Deutz Fahr Valtra G2-08 (XT-60) Valtra G2-B10 (XT-60+) ZF TE-ML 03E ZF TE-ML 05F ZF TE-ML 06B ZF TE-ML 06D ZF TE-ML 06E ZF TE-ML 06F ZF TE-ML 06K ZF TE-ML 06L ZF TE-ML 06M ZF TE-ML 06N ZF TE-ML 06P ZF TE-ML 06R ZF TE-ML 06S ZF TE-ML 06T ZF TE-ML 17E ZF TE-ML 21F" |

Tractor Transmission Fluids



Q8 Terra 4400 CVT HF 10W-30

| Specifications | Approvals | Recommendation |
|--|------------------------------|----------------|
| API GL-4; TDTO Cold Weather/ TDTO-TMS; Claas AGRISHIFT XE; | Caterpillar ZF TE-ML 06H* | |

Q8 Terra 4000 CVT 15W-40

| Specifications | Approvals | Recommendation |
|----------------|--------------------------|---|
| API GL-4 | Denison HF-0, HF-1, HF-2 | AGCO CVT ML 200 Case New Holland MAT 3505 Case New Holland MAT 3506 Case New Holland MAT 3525 Case New Holland MAT 3540 Caterpillar SATO Claas CVT Fendt Vario John Deere JDM J20C Komatsu KES 07.866 Kubota UDT Massey Ferguson CMS M 1145 New Holland NH 410-B New Holland NH 410-C Same Deutz Fahr Valtra G2-08 (XT-60) Valtra G2-B10 (XT-60+) ZF TE-ML 03E ZF TE-ML 05F ZF TE-ML 06B ZF TE-ML 06B ZF TE-ML 06D ZF TE-ML 06E ZF TE-ML 06F ZF TE-ML 06K ZF TE-ML 06L ZF TE-ML 06M ZF TE-ML 06N ZF TE-ML 06P ZF TE-ML 06R ZF TE-ML 06S ZF TE-ML 06T ZF TE-ML 17E ZF TE-ML 21F |

(Q8 Terra 2500 UTTO 10W-20 (70W-80))

| Specifications | Approvals | Recommendation |
|----------------|-----------|---|
| API GL-4 | | *Allison C-2 Allison C-3 Allison C-4 Case MS 1206 Case MS 1207 Case MS 1209 Case MS 1210 Case New Holland MAT 3505 Case New Holland MAT 3525 Case New Holland MAT 3526 Caterpillar TO-2 Denison HF-0 Denison HF-1 Denison HF-2 FNHA 2-C-201 Ford M2C86-B Ford M2C86-C John Deere JDM J20A John Deere JDM J20B John Deere JDM J20C John Deere JDM J20D Komatsu Dresser B06-0001 Komatsu Dresser B06-0002 Kubota Super UDT Kubota Super UDT2 Kubota UDT Massey Ferguson CMS M 1110 Massey Ferguson CMS M 1127-A Massey Ferguson CMS M 1127-B Massey Ferguson CMS M 1135 Massey Ferguson CMS M 1141 Massey Ferguson CMS M 1143 Massey Ferguson CMS M 1145 New Holland NH 410-C Renk Doromat 873 Renk Doromat 874-A Renk Doromat 874-B Volvo 97304 (WB 102) ZF TE-ML 03E ZF TE-ML 03F ZF TE-ML 05F ZF TE-ML 06K " |

Q8 Terra 2200 UTTO 10W-30 (75W-80)

| Specifications | Approvals | Recommendation |
|----------------|---|---|
| API GL-4 | WB 10 1 97303 ML 05F ML17E TE-ML 21F | Allison C-4 Case MS 1207 Case MS 1209 Case MS 1210 Case MS 1230 Case New Holland MAT 3505 Case New Holland MAT 3506 Case New Holland MAT 3509 Case New Holland MAT 3525 Case New Holland MAT 3540 Case New Holland MAT 3552-A Caterpillar TO-2 Deutz Allis AC Power Fluid 821 XL FNHA 2-C 200 Ford M2C134-D Ford M2C48-C2 John Deere JDM 3000 John Deere JDM J20C Komatsu KES 07.866 Komatsu Dresser B06-0002 Kubota Super UDT Kubota UDT Massey Ferguson CMS M 1135 Massey Ferguson CMS M 1141 Massey Ferguson CMS M 1143 Massey Ferguson CMS M 1145 New Holland NH 410-B New Holland NH 410-C Valtra G2-08 (XT-60) Valtra G2-B10 (XT-60+) Volvo 97302 White New Idea Q-1802 White New Idea Q-1826 ZF TE-ML 03E ZF TE-ML 03L ZF TE-ML 06K |

(Q8 Terra 2200 UTTO RC 10W-30 (75W-80) Old product Q8 T 2200)

| Specifications | Approvals | Recommendation |
|----------------|-----------------------|--|
| API GL-4 | WB 101 Volvo 97303 | Allison C-4 Case MS 1207 Case MS 1209 Case MS 1210 Case MS 1230 Case New Holland MAT 3505 Case New Holland MAT 3506 Case New Holland MAT 3509 Case New Holland MAT 3525 Case New Holland MAT 3540 Case New Holland MAT 3552-A Caterpillar TO-2 Deutz Allis AC Power Fluid 821 XL FNHA 2-C 200 Ford M2C134-D Ford M2C48-C2 John Deere JDM 3000 John Deere JDM J20C Komatsu KES 07.866 Komatsu Dresser B06-0002 Kubota Super UDT Kubota UDT Massey Ferguson CMS M 1135 Massey Ferguson CMS M 1141 Massey Ferguson CMS M 1143 Massey Ferguson CMS M 1145 New Holland NH 410-B New Holland NH 410-C Valtra G2-08 (XT-60) Valtra G2-B10 (XT-60+) Volvo 97302 White New Idea Q-1802 White New Idea Q-1826 ZF TE-ML 03E ZF TE-ML 03L ZF TE-ML 06K ZF TE-ML 05F, ZF TE-ML17E, ZF TE-ML 21F |

Q8 Terra 2200 UTTO LN (80W)

| Specifications | Approvals | Recommendation |
|----------------|-----------|--|
| API GL-4 | | API GL-4; Allison C-3 Allison C-4 Case MS 1207 Case MS 1210 Case MS 1230 Caterpillar TO-2 Ford M2C134-D Ford M2C41-B John Deere JDM J20C Massey Ferguson CMS M 1127 Massey Ferguson CMS M 1135 Massey Ferguson CMS M 1141 Massey Ferguson CMS M 1143; White New Idea Q-1802 White New Idea Q-1826 |

Q8 Terra WB Axle 80W-140

| Specifications | Approvals | Recommendation |
|----------------|-----------------------|--|
| API GL-4 | WB 101 Volvo 97303 | Case MS 1317 Case New Holland MAT 3510 New Holland NH 600 TR ZF TE-ML 05F ZF TE-ML 06K ZF TE-ML 21F |

Q8 Terra 1000 STOU 10W-40

| Specifications | Approvals | Recommendation |
|---|------------------------------|--|
| ACEA E3 API CF-4 API GL-4 API SF | ZF TE-ML 06B ZF TE-ML 07B | ACEA E7 level of soot control, wear and piston cleanliness AGCO CVT ML 200 API CI-4 level of soot control Allison C-3 Allison C-4 Case MS 1118 Case MS 1207 Case MS 1209 Case New Holland MAT 3525 Caterpillar TO-2 DIN 51524-3 HVLPD Fendt Vario Fiat AF 87 Ford M2C121-D Ford M2C134-D Ford M2C159-B Ford M2C159-C Ford M2C41-B John Deere JDM J20C John Deere JDM J27 Massey Ferguson CMS M 1127 Massey Ferguson CMS M 1139 Massey Ferguson CMS M 1141 Massey Ferguson CMS M 1144 Massey Ferguson CMS M 1145 New Holland NH 410-B Steyr 397 88001 |

Q8 Terra 1000 STOU 10W-30

| Specifications | Approvals | Recommendation |
|---|--|--|
| API CF-4 API GL-4 API SF MIL L-2104D | ZF TE-ML 06B ZF TE-ML 06D ZF TE-ML 06N ZF TE-ML 07B | ACEA E7 level of soot control, wear and piston cleanliness API CI-4 level of soot control Allison C-4 Case MS 1118 Case MS 1207 Case MS 1209 Case New Holland MAT 3525 Caterpillar TO-2 Ford M2C121-E Ford M2C134-D Ford M2C159-C Ford M2C41-B John Deere JDM J20C John Deere JDM J27 MB 227.1 MB 228.1 engine performance in SAE 10W-30 MB 228.3 level of piston cleanliness Massey Ferguson CMS M 1127 Massey Ferguson CMS M 1135 Massey Ferguson CMS M 1139 Massey Ferguson CMS M 1141 Massey Ferguson CMS M 1144 Massey Ferguson CMS M 1145 New Holland NH 024-C New Holland NH 324-B New Holland NH 410-B New Holland NH 540-B Same Deutz Fahr ZF TE-ML 06C |

Q8 Terra 1000 STOU 15W-40

| Specifications | Approvals | Recommendation |
|--|-----------|---|
| "API CE API CF API GL-3 API GL-4 API SF" | | ACEA E3 ACEA E7 level of soot control, wear and piston cleanliness AGCO CVT ML 200 API CI-4 level of soot control Allison C-4 Case New Holland MAT 3525 Case New Holland MAT 3526 Ford M2C134-D Ford M2C159-B Ford M2C159-C John Deere JDM J20C John Deere JDM J27 MB 227.1 Massey Ferguson CMS M 1135 Massey Ferguson CMS M 1139 Massey Ferguson CMS M 1143 Massey Ferguson CMS M 1144 Massey Ferguson CMS M 1145 New Holland NH 024-C New Holland NH 030-C New Holland NH 410-B New Holland NH 420-A ZF TE-ML 06B ZF TE-ML 06C |

Q8 Terra 3000 WB 15W-30 (75W-85)

| Specifications | Approvals | Recommendation |
|----------------|-----------|--|
| API GL-4 | | Allison C-3 Case MS 1207 Case MS 1209 Case UK/David Brown Caterpillar TO-2 Fiat AF 87 Ford M2C86-B Komatsu Dresser B06-0002 Landini UTTO Massey Ferguson CMS M 1127 Massey Ferguson CMS M 1135 Massey Ferguson CMS M 1141 New Holland NH 420-A Same Deutz Fahr UTTO Valmet/Volvo BM UTTO |

Q8 TERRA 3500 75W

| Specifications | Approvals | Recommendation |
|----------------|-----------|-------------------|
| | | Kessler & Co GmbH |

Q8 TERRA TO-4 SAE 10

| Specifications | Approvals | Recommendation |
|----------------|--------------|---|
| | ZF TE-ML 03C | Allison C-4 Caterpillar TO-4 DANA Eaton/Fuller Komatsu KES 07.868.1 Komatsu Dresser Micro-Clutch Vickers 35VQ25 |

Q8 TERRA TO-4 SAE 30

| Specifications | Approvals | Recommendation |
|----------------|------------------------------|---|
| | ZF TE-ML 03C ZF TE-ML 07F | Allison C-4 Caterpillar TO-4 DANA Eaton/Fuller Komatsu KES 07.868.1 Komatsu Dresser Micro-Clutch |

Q8 TERRA TO-4 SAE 50

| Specifications | Approvals | Recommendation |
|----------------|-----------|---|
| | | Allison C-4 Komatsu Dresser Micro-Clutch Caterpillar TO-4 ZF TE-ML 03C Komatsu KES 07.868.1 |

Hydraulic Fluids



Q8 Haydn 46

| Specifications | Approvals | Recommendation |
|--|---|--|
| DIN 51524-2 HLP ISO 11158 HM MAG IAS P-68, P-69, P-70 Swedish Standard SS 155434 AM | Danieli Standard 0.000.001-R15 (2020) Denison HF-0, HF-1, HF-2 | Bosch Rexroth RE 90220 notes DIN 51517-2 CL Eaton Brochure 03-401-2010 |

Q8 Heller 46

| Specifications | Approvals | Recommendation |
|--|-----------|--|
| Afnor DIN 51524-3 HVLP ISO 11158 HV ISO 6743-4 HV | | Bosch Rexroth RE 90220 notes Eaton Brochure 03-401-2010 |

Q8 Hogarth 46

| Specifications | Approvals | Recommendation |
|---|--------------------------|--|
| DIN 51524-3 HVLP ISO 11158 HV MAG IAS P-68, P-69, P-70 Swedish Standard SS 155434 AV | Denison HF-0, HF-1, HF-2 | Bosch Rexroth RE 90220 notes Eaton Brochure 03-401-2010 |

Hydraulic Fluids

Q8 Hindemith LT

| Specifications | Approvals | Recommendation |
|--|-----------|-------------------|
| DIN 51524-3 HVLP ISO 11158 HV Swedish Defense FSD 8401 | | Volvo STD 1286.07 |

Q8 Holbein Bio Plus 46

| Specifications | Approvals | Recommendation |
|----------------|-----------|---|
| ISO 15380 HEES | | Bosch Rexroth RE 90221 notes Swedish Standard SS 155434 BBV 46 Environmentally acceptable |

Q8 Holbein Bio Long Life 46

| Specifications | Approvals | Recommendation |
|---|-----------|------------------------------|
| ISO 15380 HEES Swedish Standard SS 155434 AAV 46 Environmentally acceptable | | Bosch Rexroth RE 90221 notes |

Heinichen 46

| Specifications | Approvals | Recommendation |
|----------------------------------|-----------|--|
| DIN 51524-2 HLPD ISO 11158 HM | | Bosch Rexroth RE 90220 notes Eaton Brochure 03-401-2010 |

Greases



Q8 Rembrandt EP 00

Specifications

DIN 51502 KP00K-30
ISO 6743 L-XCCHB00

Q8 Rembrandt EP 00 WV

Specifications

DIN 51502 KP00G-30
ISO 6743 L-XCBEB00

Q8 Rembrandt EP 1

Specifications

DIN 51502 KP1K-30
ISO 6743 L-XCCFB1

Approvals

Danieli

Recommendation

Q8 Rembrandt EP 2

Specifications

DIN 51502 KP2K-30
ISO 6743 L-XCCFB2

Approvals

Danieli Standard 0.000.001-R15 (2020)

Recommendation

Q8 Rembrandt Moly 2

Specifications

DIN 51502 KPF2K-30
ISO 6743 L-XCCHB2

Approvals

Danieli Standard 0.000.001-R15 (2020)

Recommendation

Greases

Q8 Rubens WB -b

Specifications

ASTM D 4950 GC-LB
DIN 51502 KP2N-30
ISO 6743 L-XCDIB2

Q8 Multi LCX 2

Specifications

DIN 51502 KP2K-20
ISO 6743 L-XBCDB2

Q8 Ruysdael WR 2

Specifications

DIN 51502 KP2K-20
ISO 6743 L-XBCIB2

Q8 Rodin EP 202

Specifications

DIN 51502 KP2N-30
ISO 12924 L-XB(F)DIB2

Renoir EP 132

Specifications

DIN 51502 KPE2E-20
ISO 12924 L-XB(F)BiB 2
Swedish Standard AV Environmentally acceptable



AGRICULTURAL OILS

Q8Oils Sustainability

Our sustainability commitment 42

03

Our sustainability commitment



As lubricants play a vital role in keeping the world moving, it is crucial that they are produced responsibly. At Q8Oils, we are dedicated to leading the way in environmental responsibility. For years, we have been dedicated to minimising our environmental impact through sustainable practices, while also supporting our customers to reduce their footprint.



Minimising footprint

Lowering our negative environmental impact

Our goal is to minimise our footprint through product innovation on every component that impacts this footprint, such as relying on renewable energy sources, optimising production processes and using sustainable raw materials.

Product Carbon Footprint

The PCF-value represents the total amount of greenhouse gas emissions associated with the lubricant and is mentioned on every product sheet for full transparency.



Maximising handprint

Enhancing our positive environmental impact

At Q8Oils, we go beyond carbon neutrality. We actively contribute to the sustainability efforts of customers and partners. Our lubricants ensure energy efficiency and extended service life, helping other companies to reduce their carbon footprint.



Reduce friction



Reduce energy consumption



Increase equipment lifetime

Sustainability beyond our products

Shared value and social responsibility are rooted in our values.

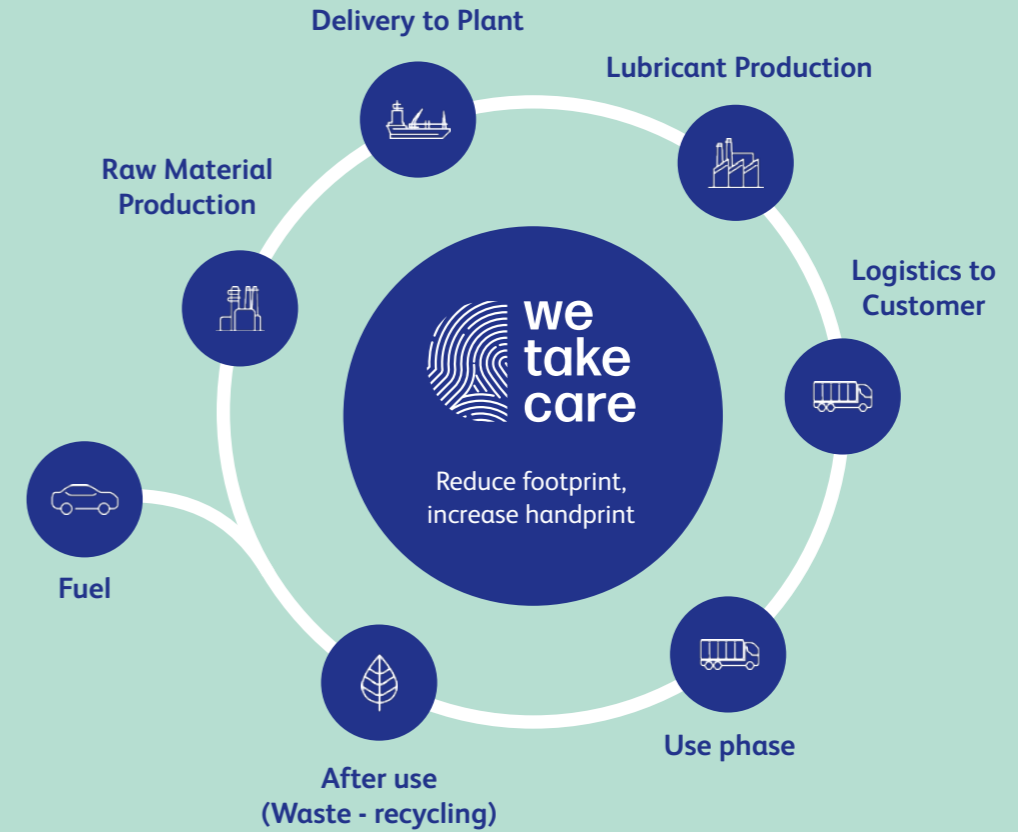
We actively engage with the communities in the regions where we operate to foster environmental stewardship and human capital development. Our BeWell program promotes employee well-being through preventive medical check-ups, wellness campaigns, and physical and mental health training.

Partnerships are vital for advancing our Sustainable Development Goals (SDGs). We collaborate with our suppliers to develop sustainable packaging solutions and help to promote responsible industry practices through our partnership with the Union of the European Lubricants Industry (UEIL).

Did you know... we're also committed to sustainability through tree planting and initiatives like World Cleanup Day?



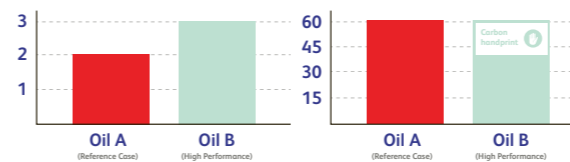
Scan to find out more about We Take Care



Why is PCF Important? (Product Carbon Footprint)

- Evaluation of the PCF includes evaluation of the use phase (= handprint/avoided emissions)
- The product carbon handprint describes the positive environmental impact of the product in use throughout its lifetime.
- Improved focus on the carbon handprint can identify opportunities to reduce the impact on the environment and drive change.

The carbon handprint are the avoided emissions in the use phase of lubricants



Conclusions

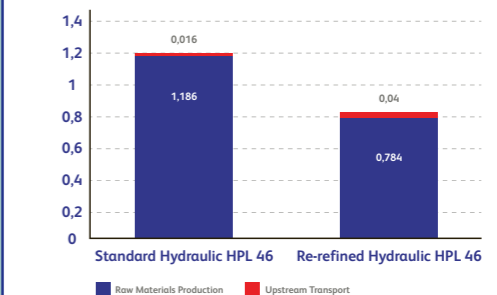
PCF evaluation (Cradle-to-Gate) indicates higher footprint value for product B. After evaluating the use phase, after 10 thousand hours in excavator equipment. The total emissions due to the use of product B are lower.

GWP Reductions (Global Warming Potential)

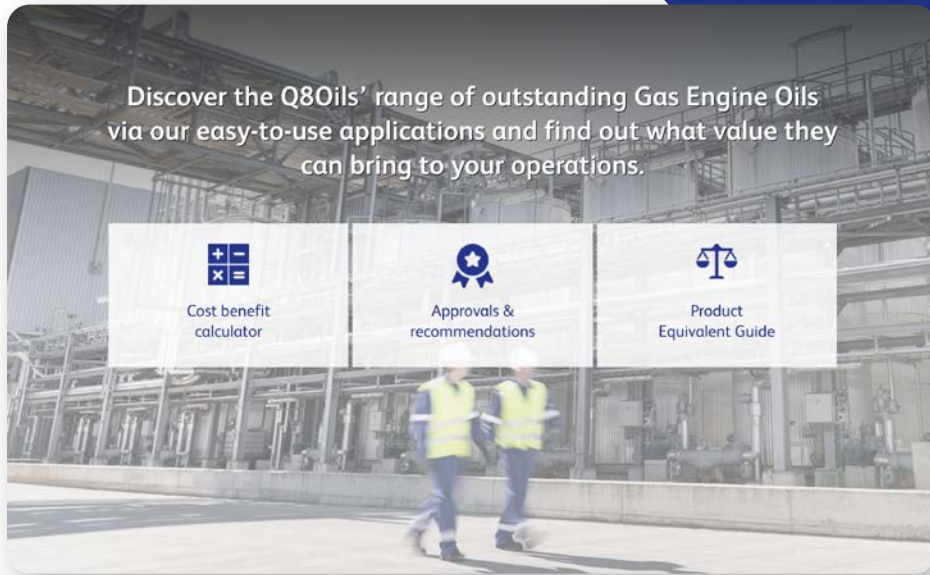
- GWP of Haydn, Heller, Handel varies between 0.93 and 1.334 kg CO₂eq/kg oil
- GWP of virgin hydraulics varies between 1.7 and 2.17 kg CO₂ eq/kg oil
- Q8 main-line hydraulics offer 63 % to 82 % reduction of GWP versus virgin hydraulics.

Standard HLP 46 versus re-refined HLP 46 – CARBON FOOTPRINT

Carbon footprint per life cycle stage (in kgCO₂eq/kg)



It is a reduction of 30,9% kg potential GreenHouse Gas per 1kg Lubricant



Consult our oil recommendation tool to find out which Q8Oils product is suitable for optimal performance of your vehicle.

<https://tools.Q8Oils.com/>

Q8Oils

Petroleumkaai 7
2020 Antwerp - Belgium

T +32 (0)3 247 38 11
E Q8Oilsmarketing@Q8.com

WWW.Q8OILS.COM



Visit our website
WWW.Q8OILS.COM

